





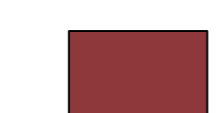




LEGENDE

-  Abgrenzung Untersuchungsgebiet
-  Wohnen
-  Büro / Dienstleistungen / Praxis
-  Öffentliche Nutzung
-  Lager / geringe Nutzung
-  Leerstand
-  Gaststätte / Hotelgewerbe
-  in Renovierung
-  Baudenkmal

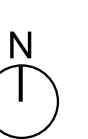
Markt Dürrowangen
Landkreis Ansbach

Vorbereitende Untersuchungen

Plan - Nr. 3
Bestandsplan

Nutzung Obergeschoss

Maßstab 1:1.000
05.07.2024



stadt+land

stadt + land
Constantin Rühl, M.Sc.Urbanistik,
Badstr. 13-15, 90762 Fürth,
Tel. 0157/58219418
c.ruehl@stadtundland.eu
www.stadtundland.eu

Der Plan ist nach §2 Abs. 1 Nr. 7 UrhG geschützt